




Create a directory called CS120D and put the CPS you downloaded from the Connect systems web site. A direct link to the CS120 programs is as follows:

<https://www.csi-radios.com/support/connect-systems/new-category-4/>

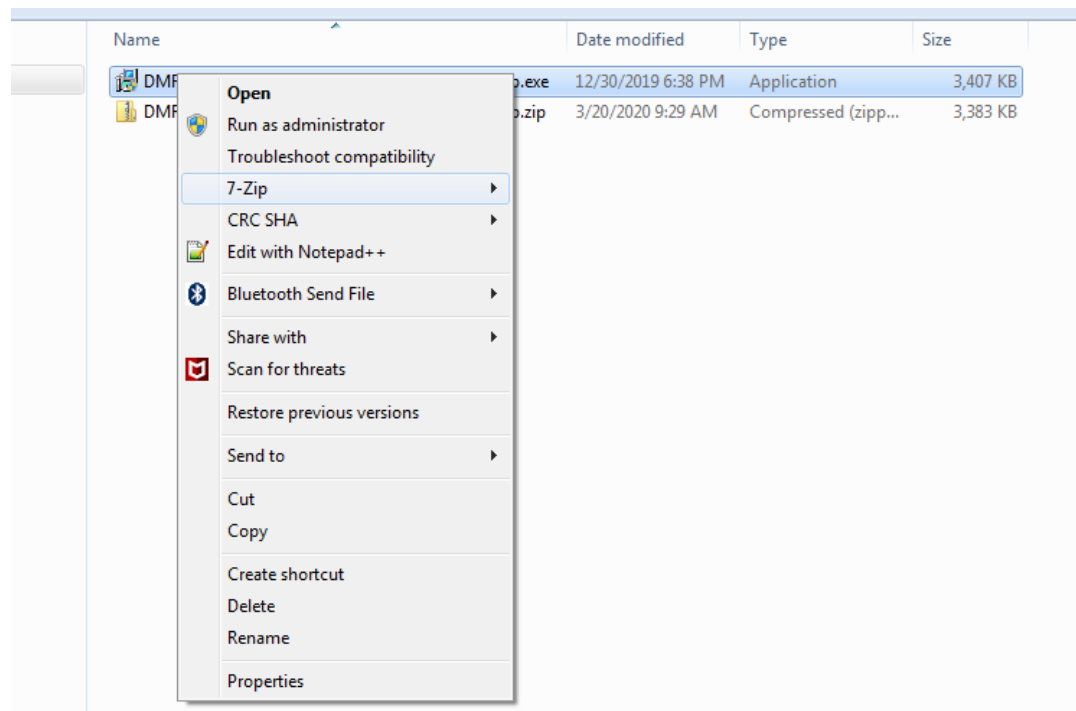
Your directory should now look as follows:

Name	Date modified	Type	Size
 DMR_CPS_CSI_CS120D_CS100D_V1.03.13.05_setup.zip	3/20/2020 9:29 AM	Compressed (zipp...	3,383 KB

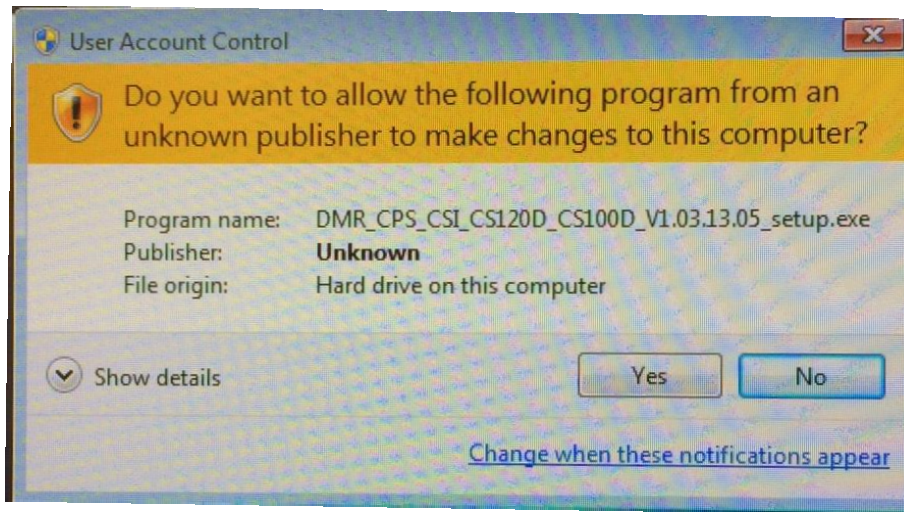
Unzip the file and your directory should now look as follows:

Name	Date modified	Type	Size
 DMR_CPS_CSI_CS120D_CS100D_V1.03.13.05_setup.exe	12/30/2019 6:38 PM	Application	3,407 KB
 DMR_CPS_CSI_CS120D_CS100D_V1.03.13.05_setup.zip	3/20/2020 9:29 AM	Compressed (zipp...	3,383 KB

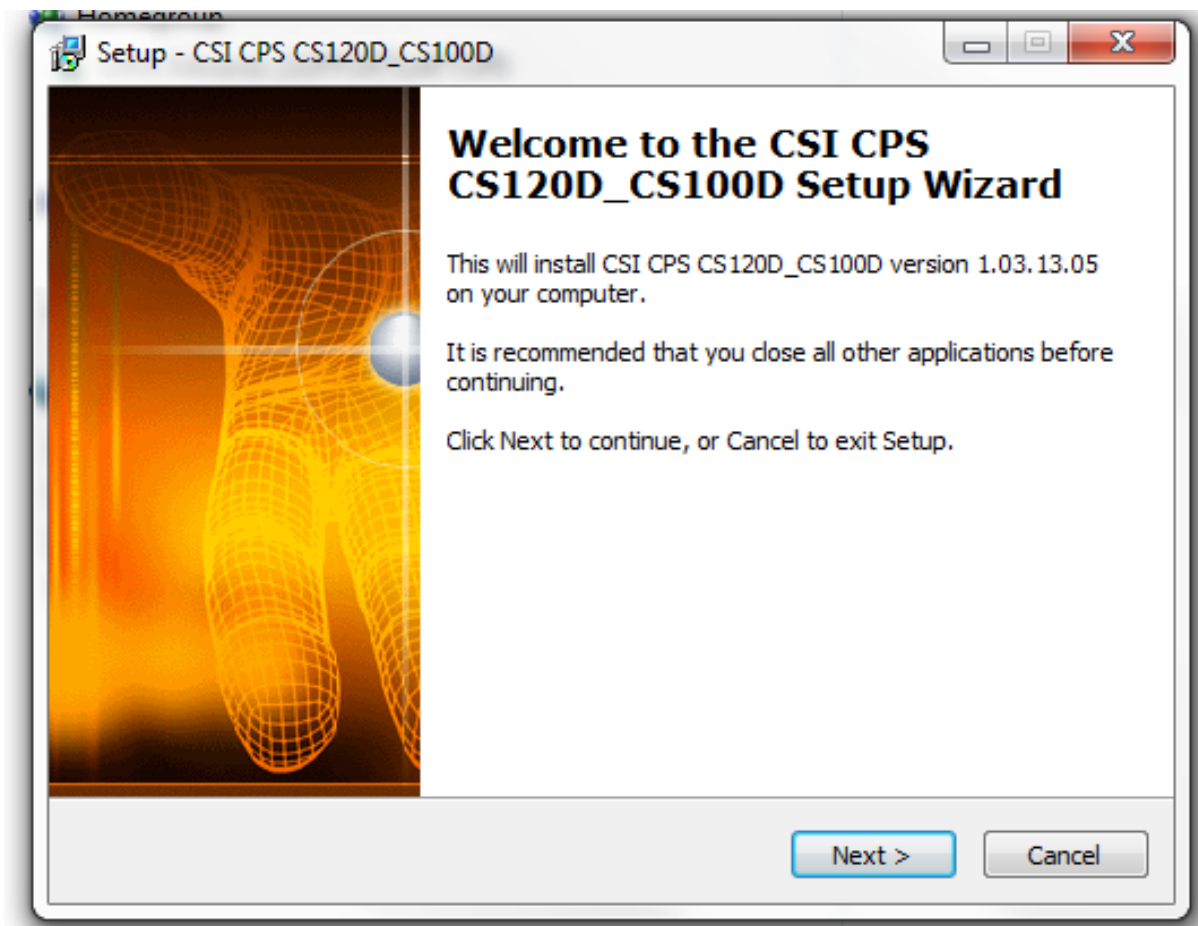
Highlight the “exe” file using the left button on your mouse. Then right click the mouse button and you should get something that looks similar to:



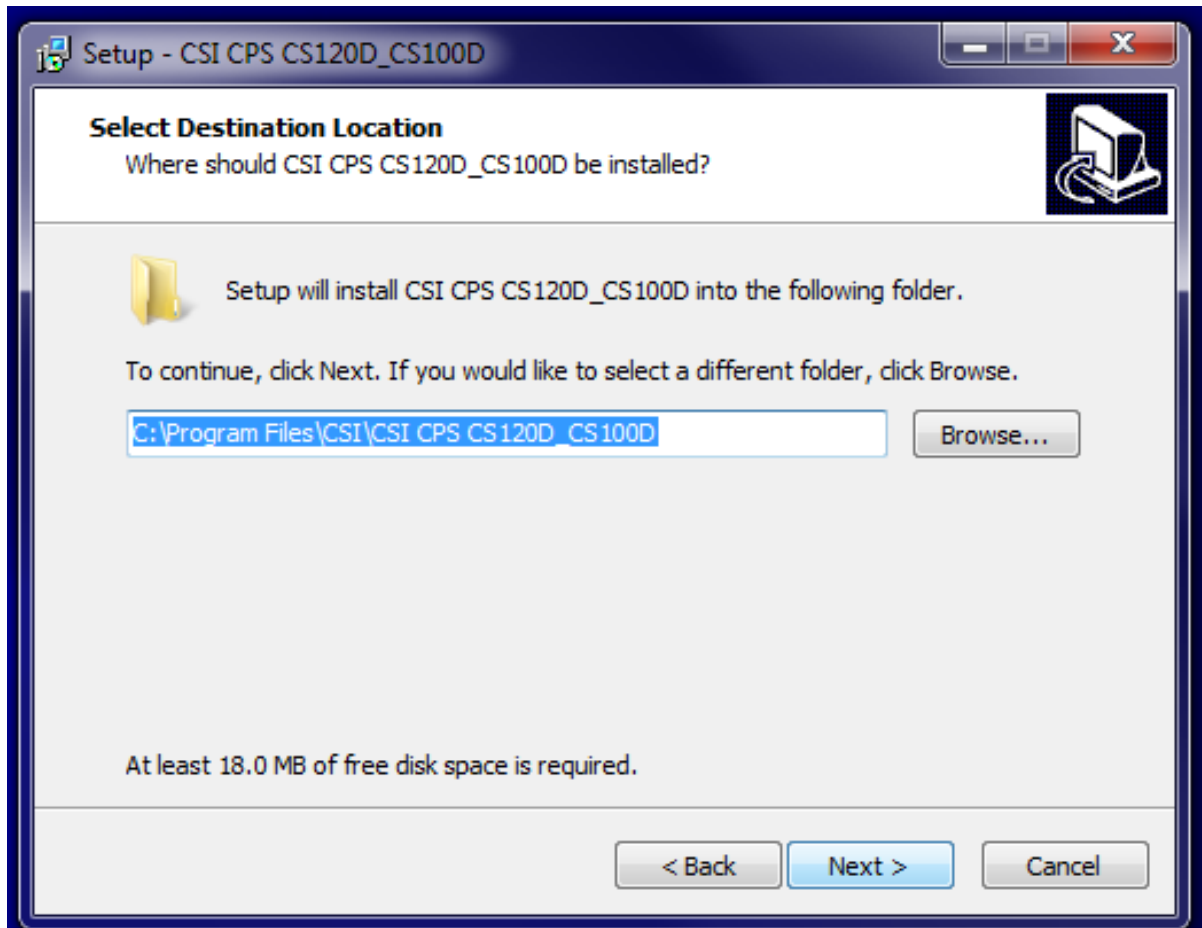
Select run as administrator and you should get



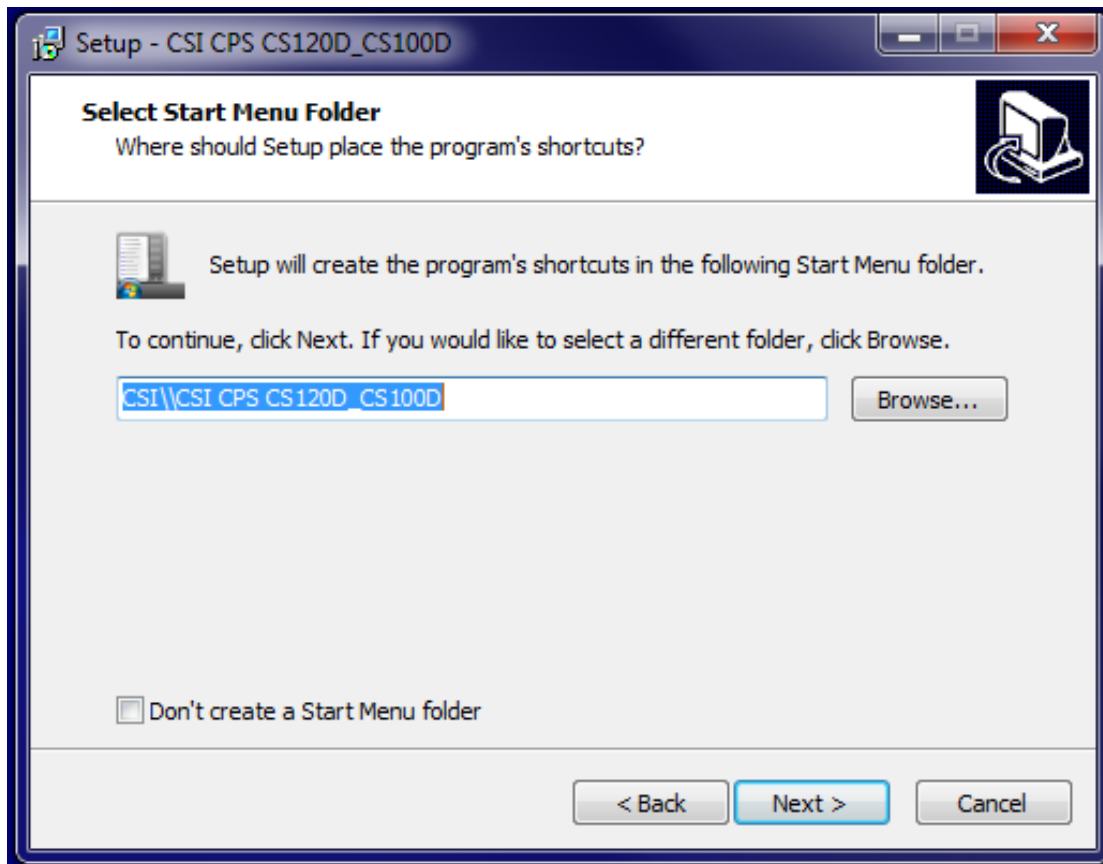
Press the "Yes" button and you should get:



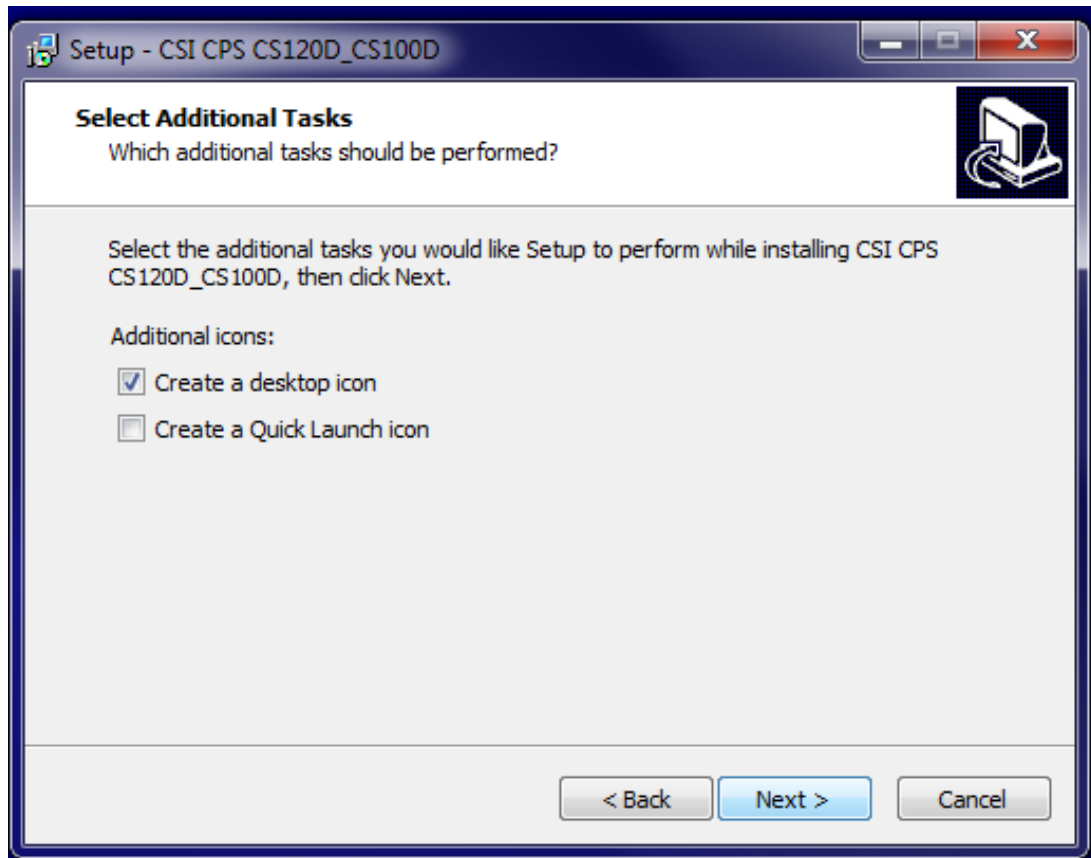
Turn on your CS120 and attach the programming cable between the radio and the USB port of your computer. Press the “Next” button and you will get:



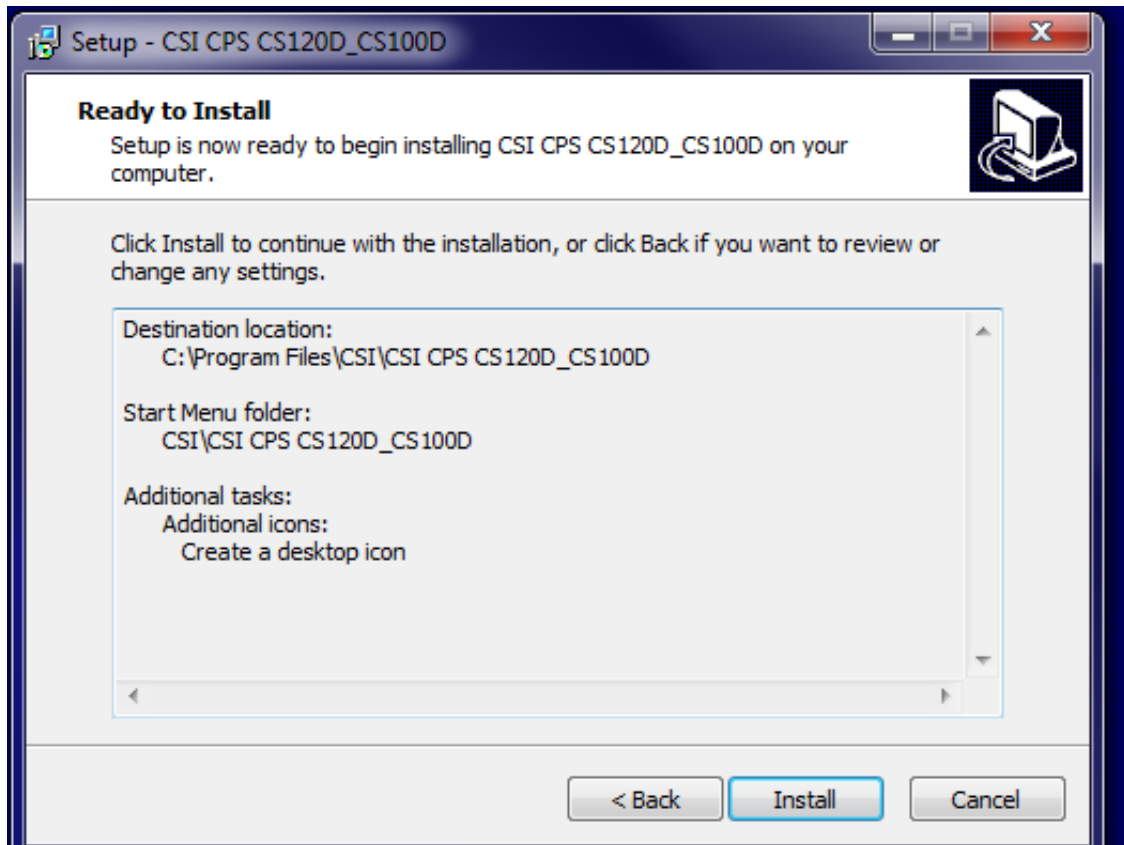
Press the “Next: button and you will get:



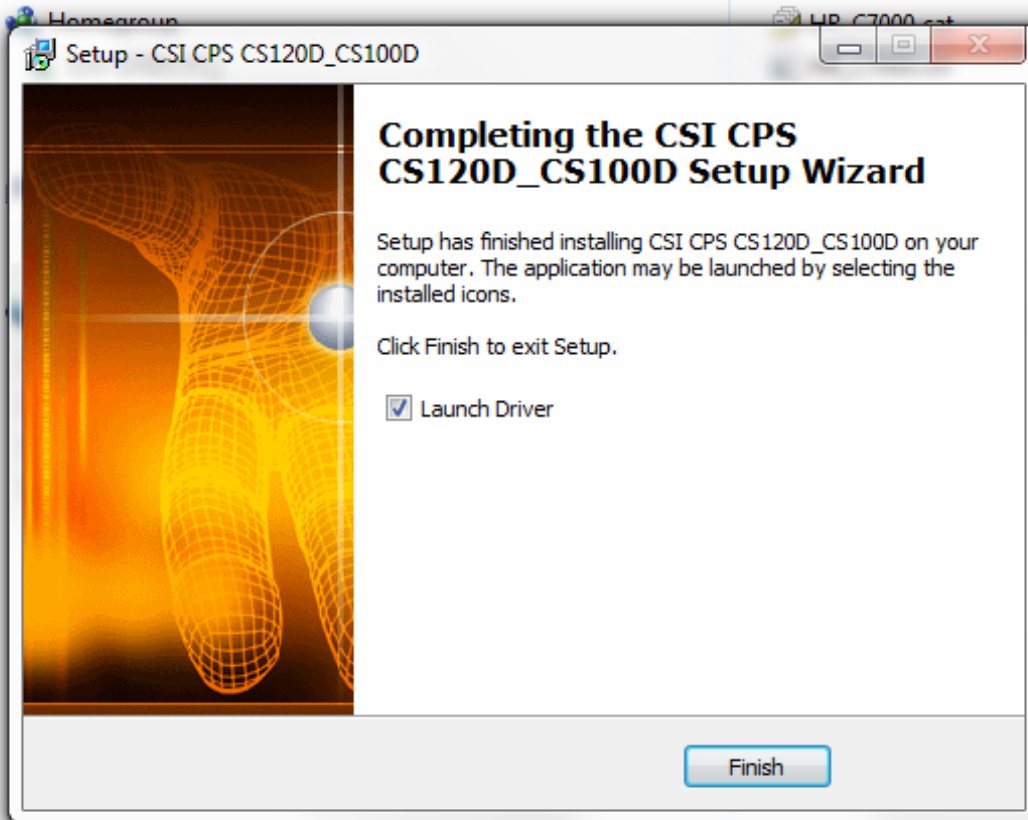
Press the "Next" button and you will get



Press the "Next" button and you will get:

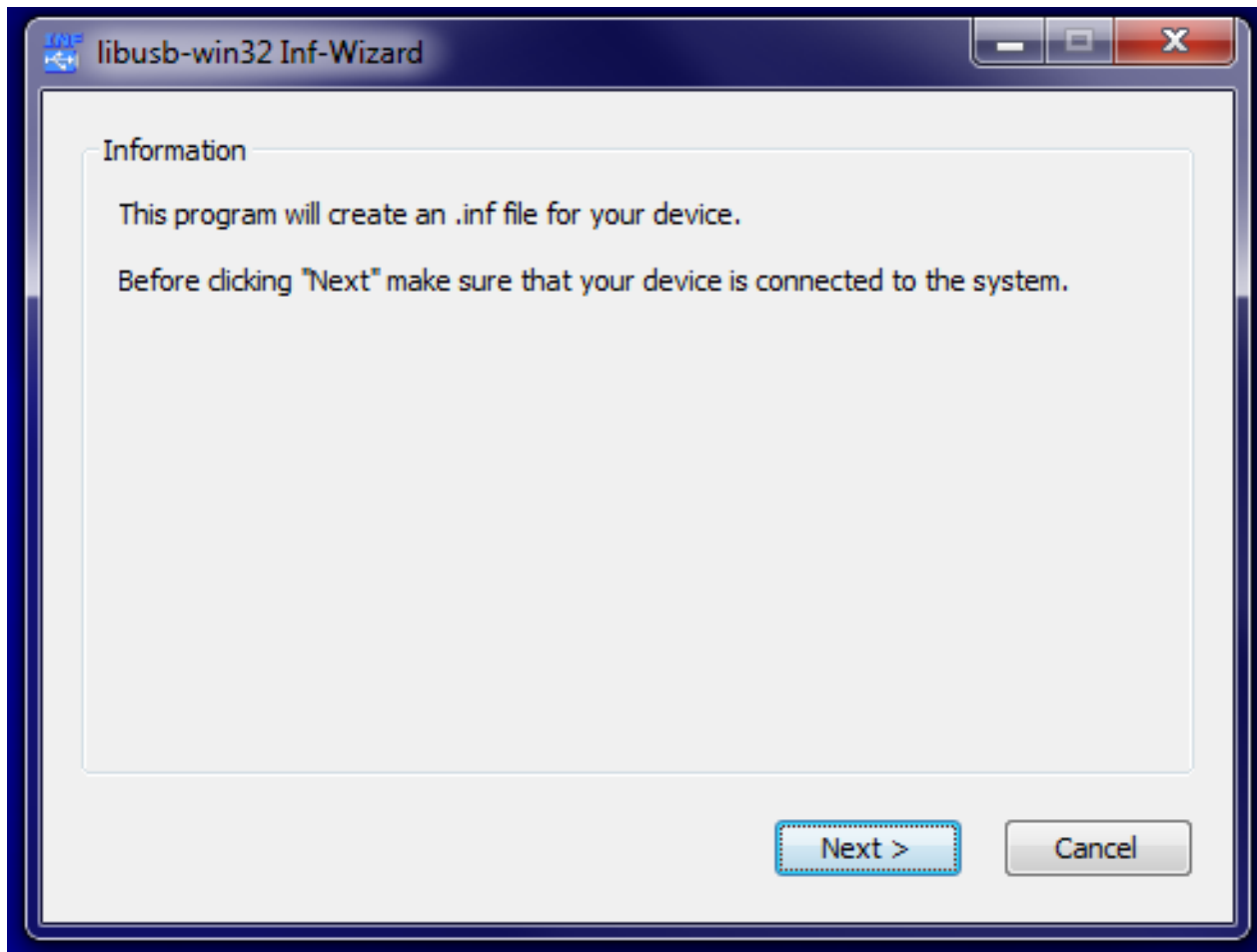


Now press the install key and you will get



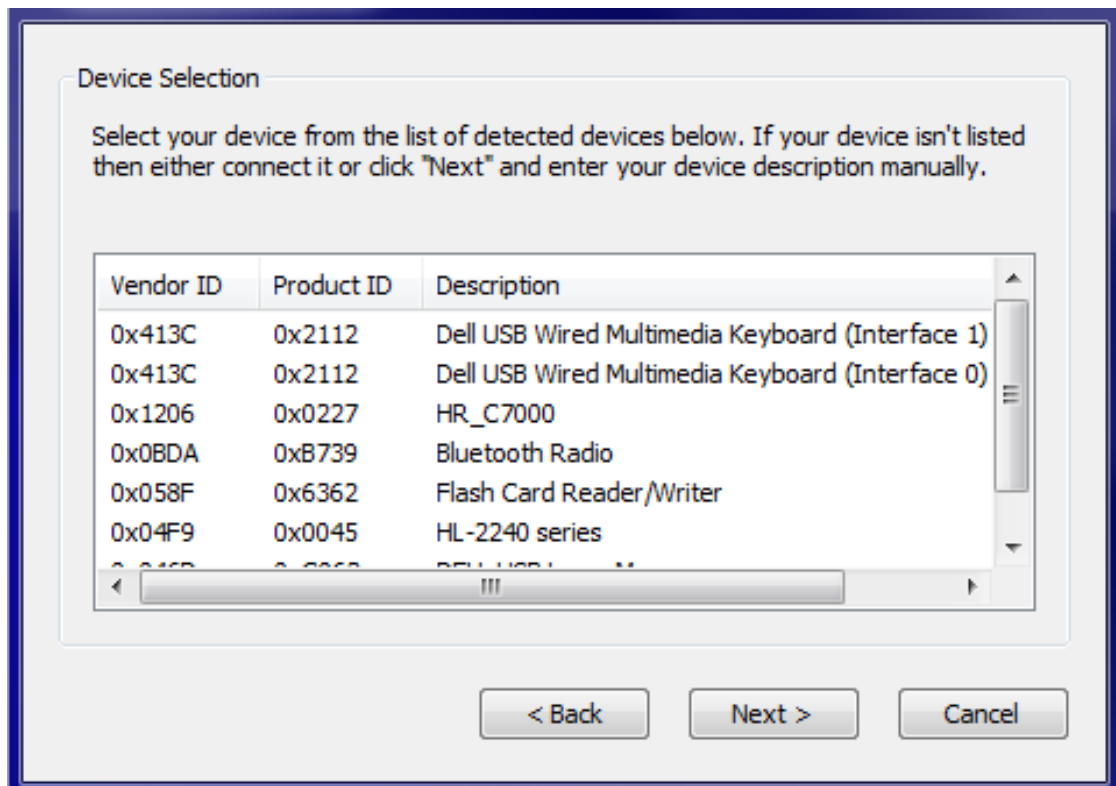
Press

Press the finish key and you will get:

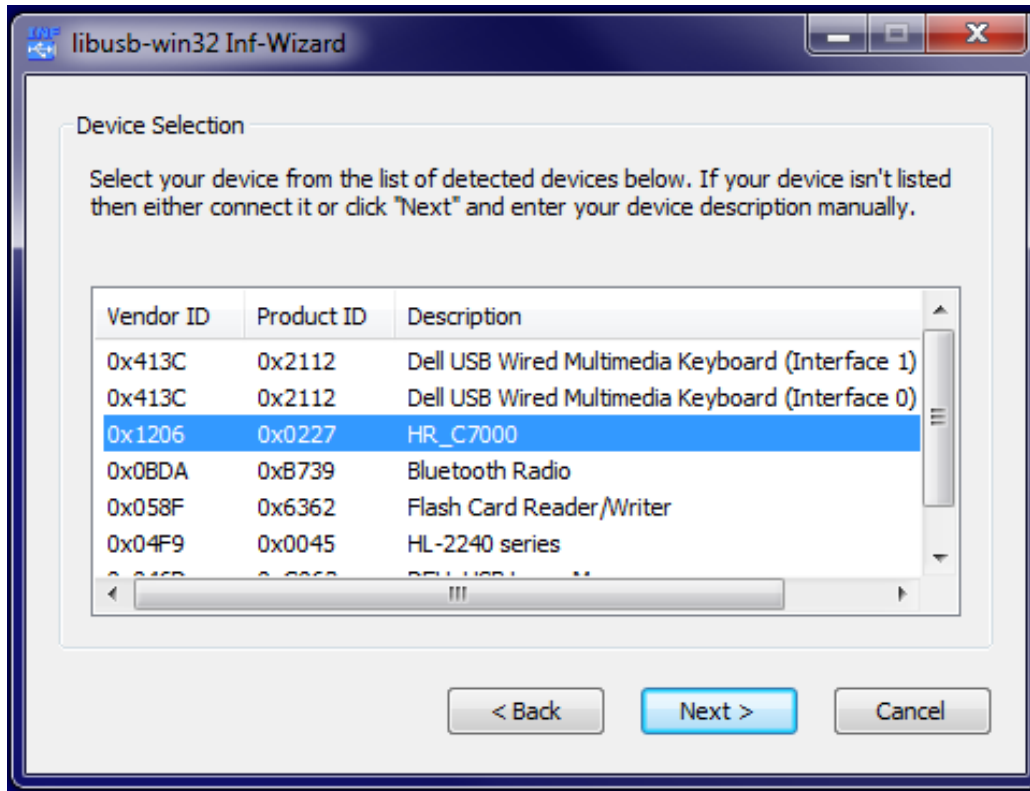


Press the "Next" button and you will get:

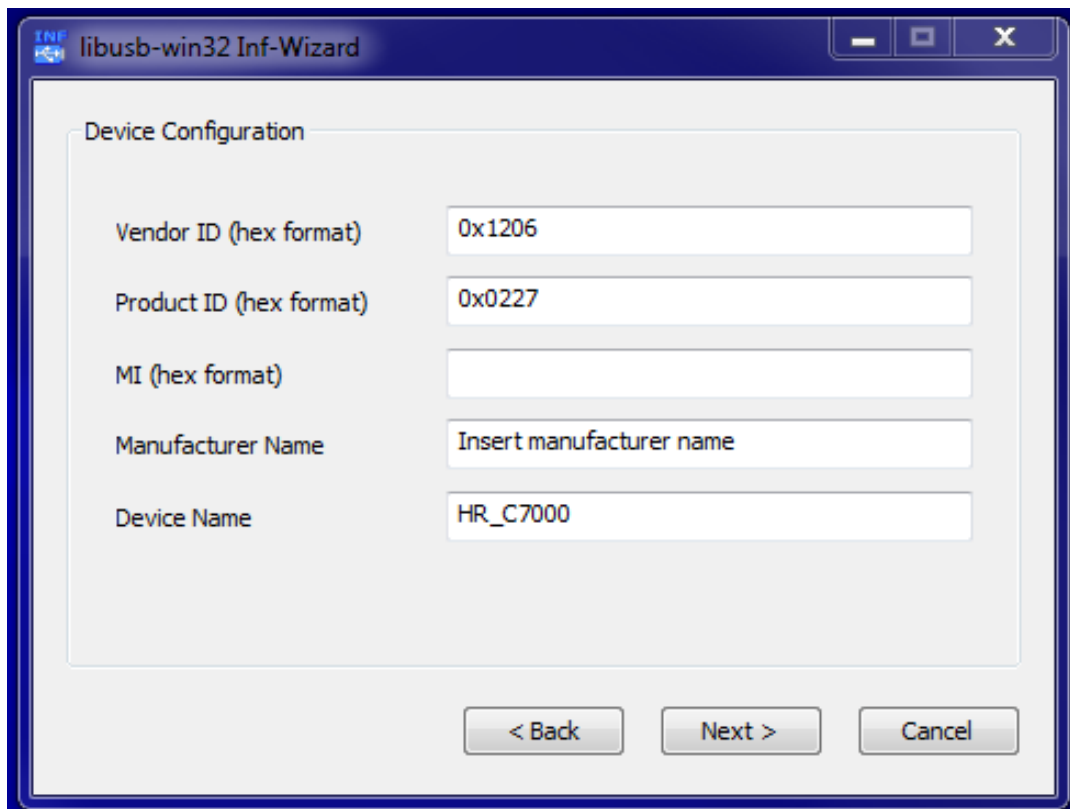




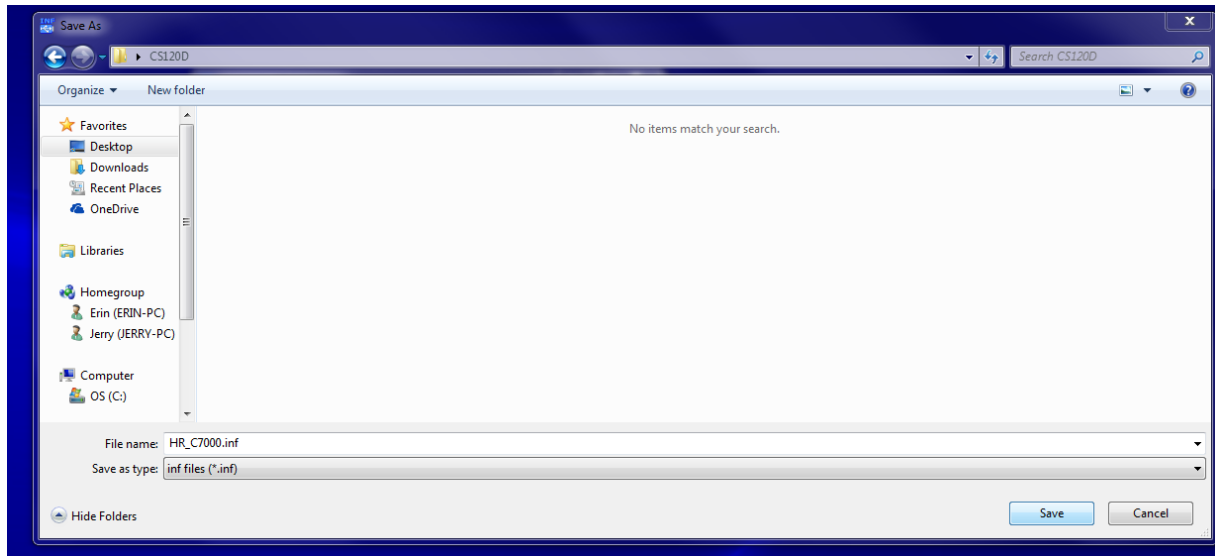
Highlight the HR\_C7000 as below.



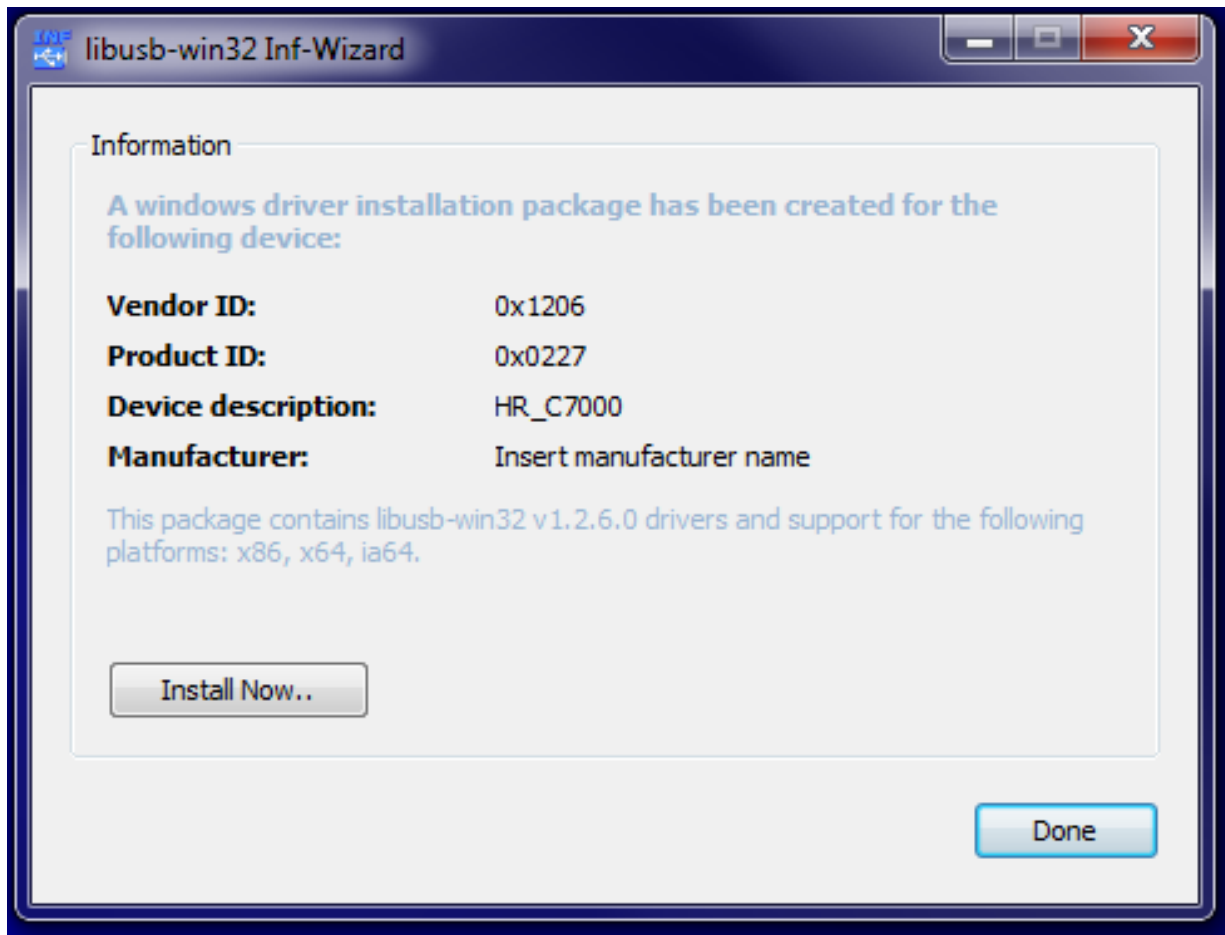
Press the "Next" button and you will get:



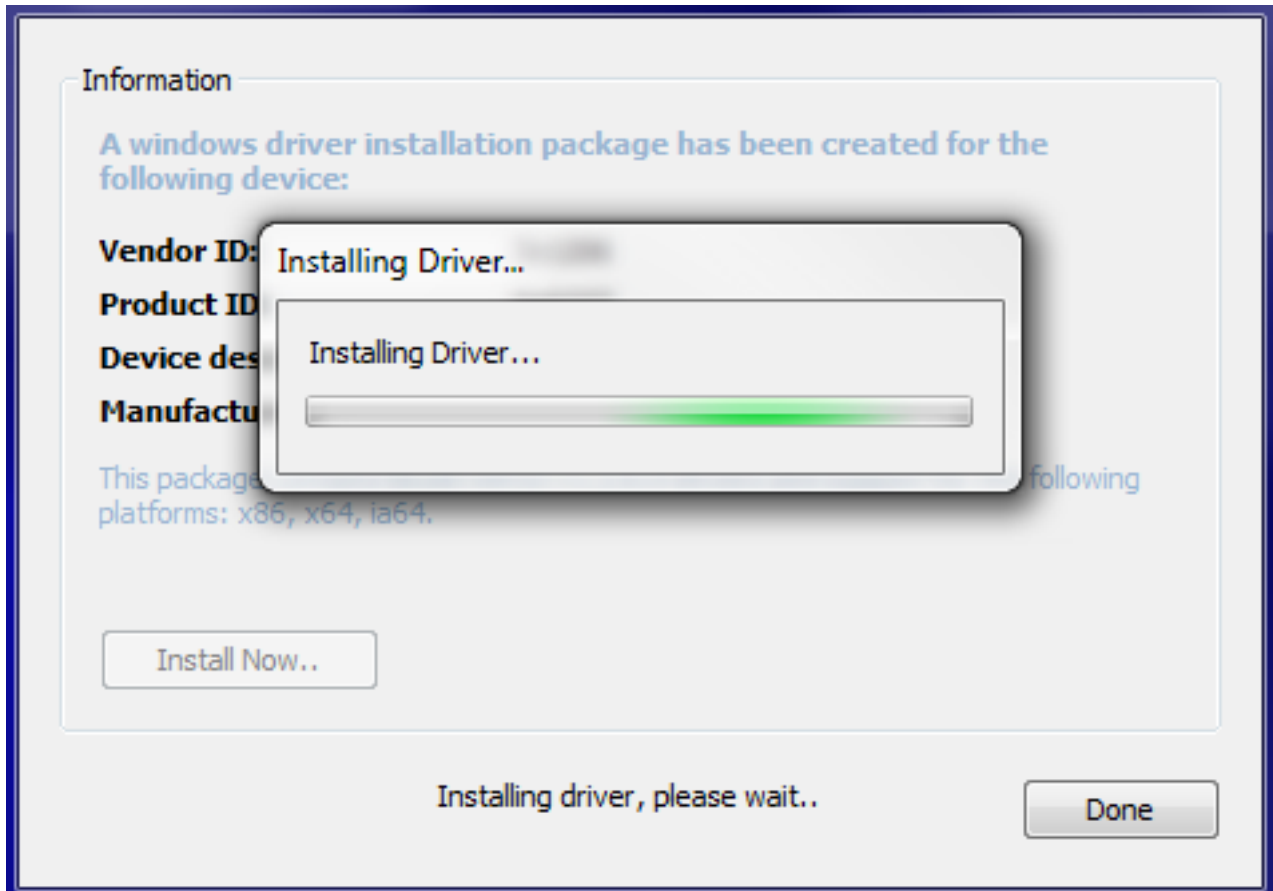
Press the next key and select the CS120D directory you created earlier and press “Save” button



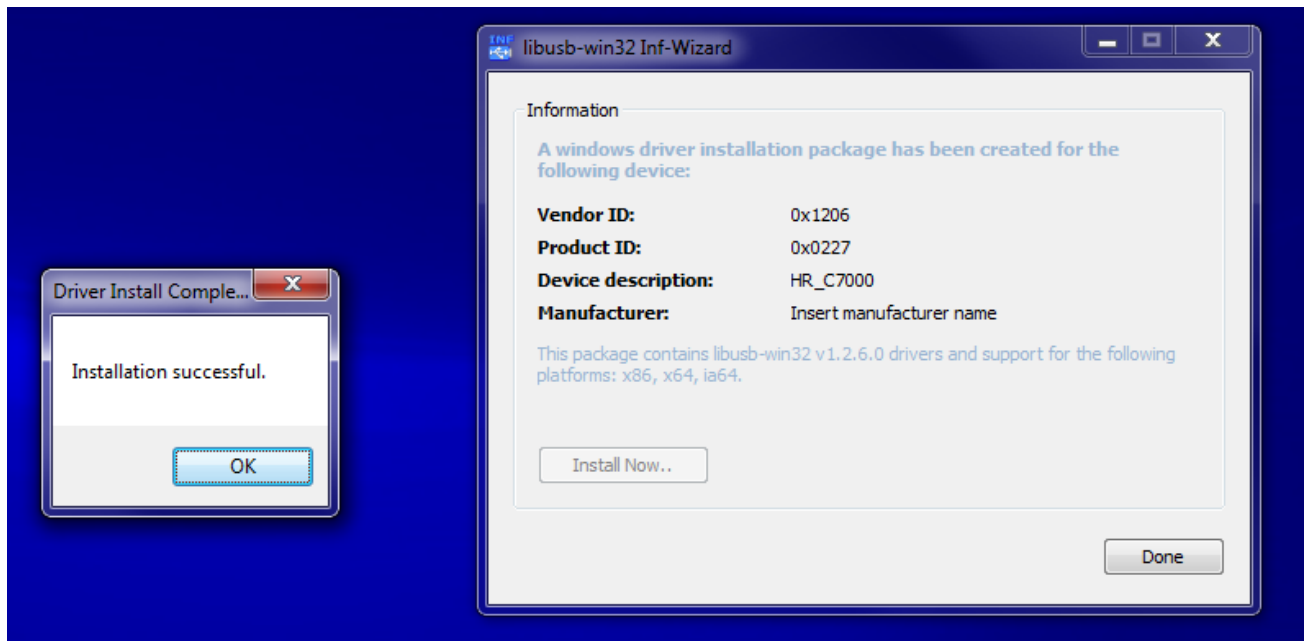
You now get



Press the “Install Now..” button and you get the following:



When the installation is complete you get the following screen:



Press the “OK” button and you are done.

Don’t erase the CS120D directory you created earlier.

Find the CPS and you are now ready to use it. Hint... It has a big green “C” for an ICON.